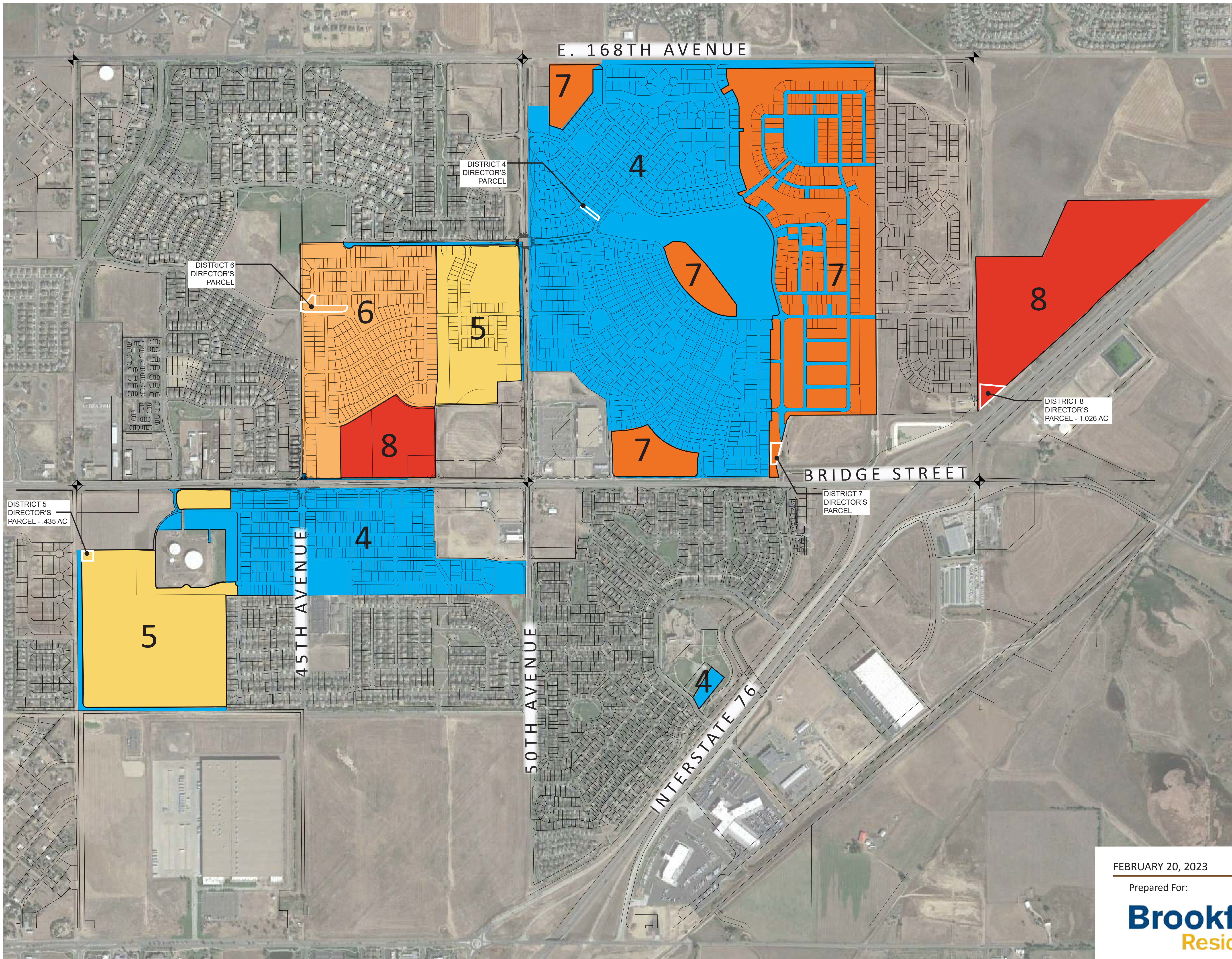


BRIGHTON CROSSINGS

Brighton Crossings Metropolitan Districts



LEGEND:

- Section Corner
- District 4
- District 5
- District 6
- District 7
- District 8

BRIGHTON CROSSING METRO DISTRICT LAND DISTRIBUTION TABLE

| PARCEL | AC | % OF TOTAL |
|------------------|----------------|---------------|
| Metro District 4 | 533.764 | 57.1% |
| Metro District 5 | 107.767 | 11.5% |
| Metro District 6 | 73.611 | 7.9% |
| Metro District 7 | 131.159 | 14.0% |
| Metro District 8 | 88.671 | 9.5% |
| TOTAL: | 934.972 | 100.0% |

FEBRUARY 20, 2023

Prepared For:
Brookfield Residential

Prepared By:
Redland
 WHERE GREAT PLACES BEGIN
 720.283.6783 Office
 1500 West Canal Court
 Littleton, Colorado 80120
REDLAND.COM

